

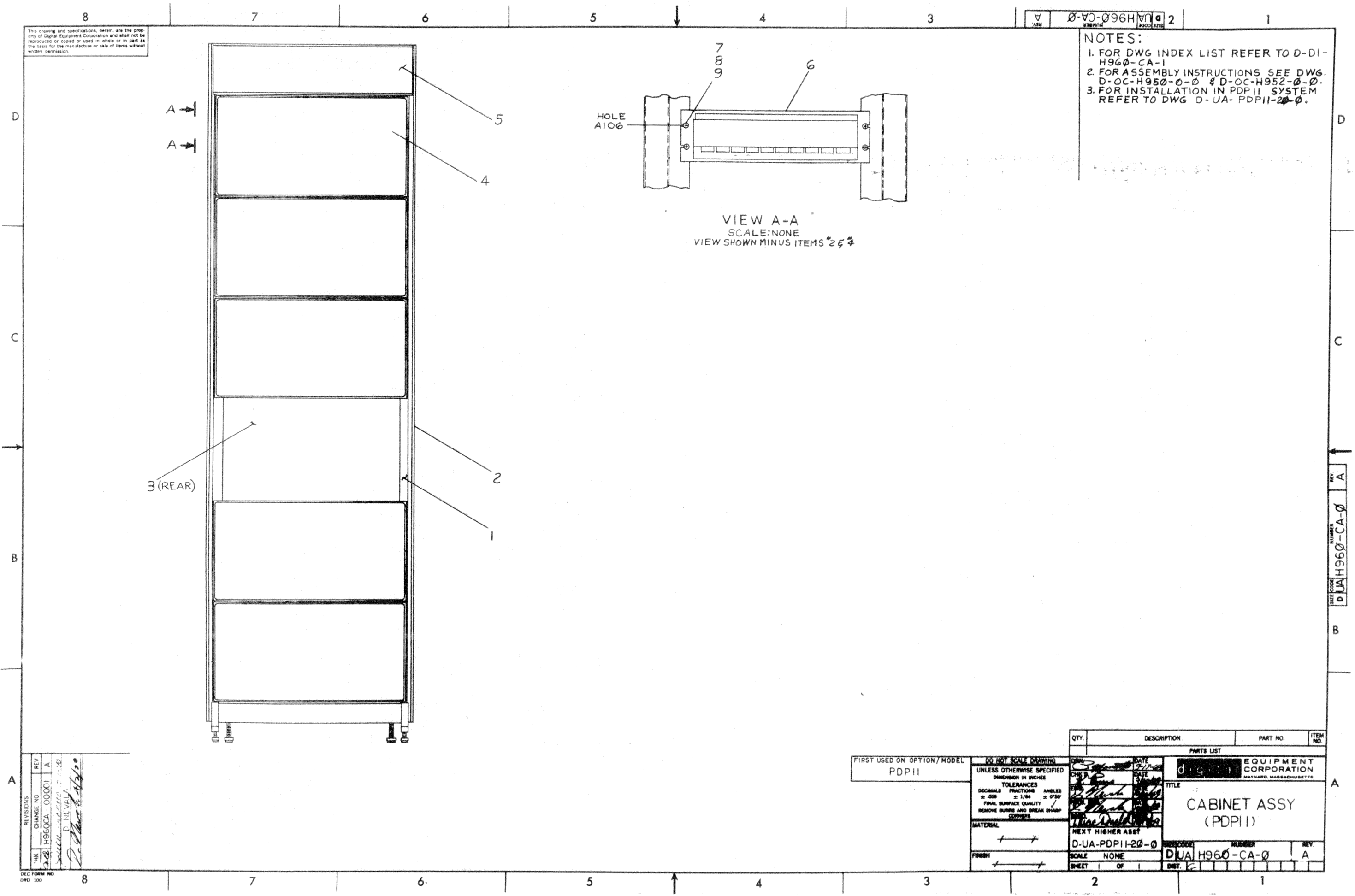
DIGITAL EQUIPMENT CORPORATION MAYNARD, MASSACHUSETTS					QUANTITY / VARIATION																
PARTS LIST																					
MADE BY P. MARCOTTE		CHECKED K. RUSS		SECTION																	
DATE 9/17/69		DATE 9/26/69		1																	
ENG <i>D. Harada</i>		PROD <i>T. MacDonald</i>		ISSUED SECT.																	
DATE 10/16/69		DATE 10/17/69		1																	
ITEM NO.	DWG NO. / PART NO.	DESCRIPTION																			
1	C-PL-7006501-1-0	BASIC CABINET ASSY 19"			1																
2	D-UA-H952-AA-0	PANEL, END H952-AA			2																
3	D-UA-H950-BA-0	FULL LENGTH DOOR 19" (R.H.)			1																
4	D-UA-H950-QA-0	COVER PANEL 10 1/2			5																
5	C-IA-7407936-4-0	LOGO FDP 11			1																
6	D-AD-7005909-0-0	DISTRIBUTION PANEL, ASSY			1																
7	9006074-3	SCR PHL TRUSS HD #10-32 X 5/8 SST			4																
8	9006635	LOCK WASHER INT TOOTH #10			4																
9	9007786	NUT #C31758-1032-27 TINNERMAN			4																
TITLE					ASSY NO.					SIZE		CODE		NUMBER				REV.		ECO NO.	
CABINET ASSY (PDP 11)					D-UA-H960-CA-0					A		PL		H960-CA-0				A		H960CA 00001	
					SHEET 1 OF 1					DIST. G											

DEC FORM NO.
DRA 110



This drawing and specifications herein are the property of Digital Equipment Corporation and shall not be reproduced or copied or used in whole or in part as the basis for the manufacture or sale of items without written permission.

- NOTES:**
1. FOR DWG INDEX LIST REFER TO D-DI-H960-CA-1
 2. FOR ASSEMBLY INSTRUCTIONS SEE DWG. D-OC-H950-0-0 & D-OC-H952-0-0.
 3. FOR INSTALLATION IN PDP11 SYSTEM REFER TO DWG D-UA-PDP11-20-0.



VIEW A-A
SCALE: NONE
VIEW SHOWN MINUS ITEMS 2 & 3

REV	CHANGE NO.	DATE	BY
1	H960CA-00001	11-17-70	D. J. V. V.

FIRST USED ON OPTION/MODEL
PDP11

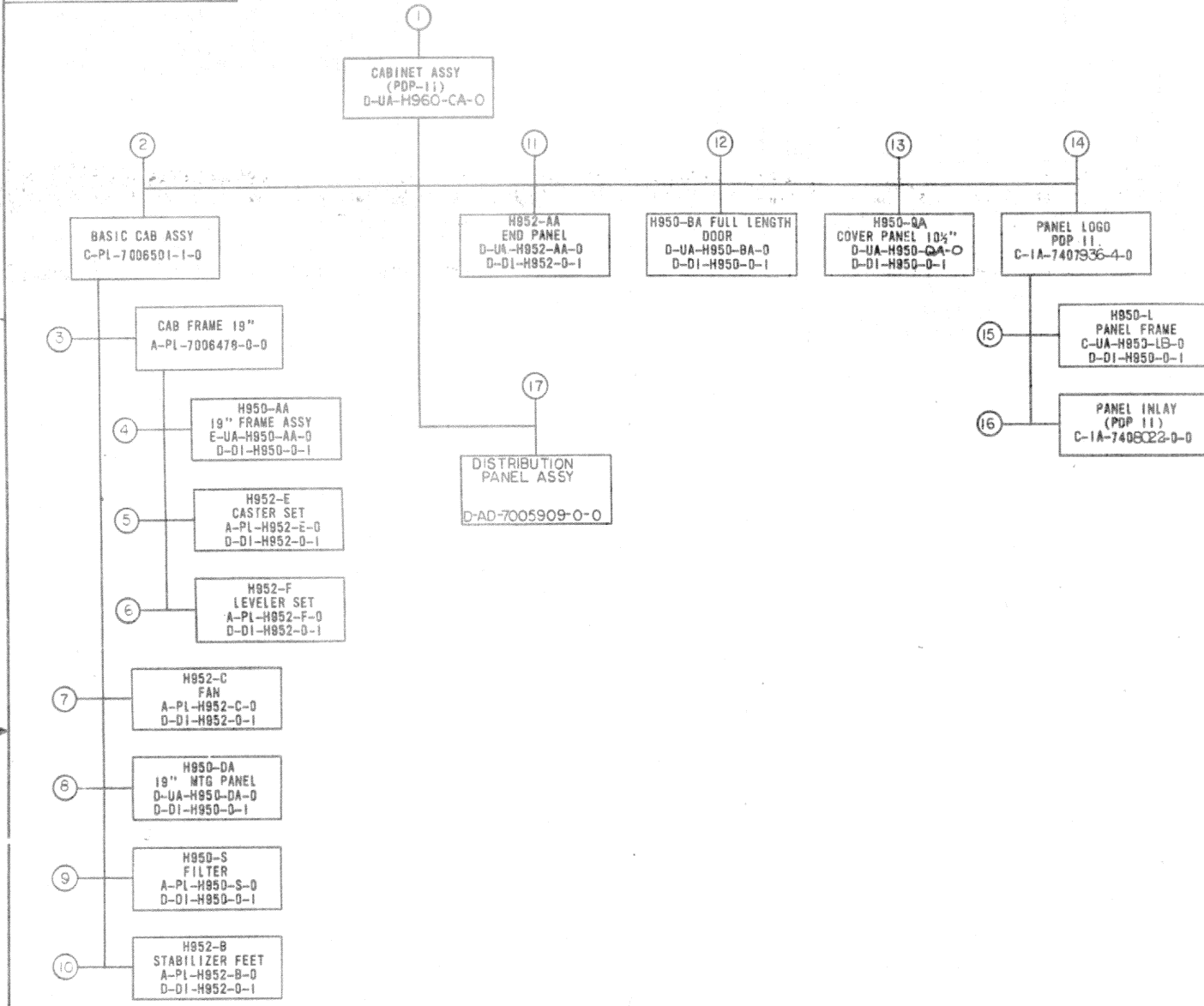
DO NOT SCALE DRAWING
UNLESS OTHERWISE SPECIFIED
DIMENSION IN INCHES
TOLERANCES
DECIMALS FRACTIONS ANGLES
± .005 ± 1/64 ± 0°30'
FINAL SURFACE QUALITY
REMOVE BURRS AND BREAK SHARP CORNERS
MATERIAL
FINISH

QTY.	DESCRIPTION	PART NO.	ITEM NO.
PARTS LIST			
EQUIPMENT CORPORATION MAYNARD, MASSACHUSETTS		TITLE CABINET ASSY (PDP11)	
NEXT HIGHER ASST D-UA-PDP11-20-0		SCALE NONE	REV A
SHEET 1 OF 1		DUA H960-CA-0	

SIZE CODE: D
 NUMBER: H960-CA-0
 REV: A

This drawing and specifications, herein, are the property of Digital Equipment Corporation and shall not be reproduced or copied or used in whole or in part as the basis for the manufacture or sale of items without written permission.

1-0-096H 10 2



MECHANICAL			DEPT. USAGE		ELECTRICAL			DEPT. USAGE	
FIND NO.	DESCRIPTION	PART NO.	PRODCUST	F/C	FIND NO.	DESCRIPTION	PART NO.	PRODCUST	F/C
1	CABINET ASSY CABINET ASSY (PL)	D-UA-H960-CA-0 A-PL-H960-CA-0							
2	BASIC CAB ASSY KICK PLATE	C-PL-7006501-1-0 C-MD-7406765-0-0							
3	CAB FRAME ASSY	A-PL-7006479-0-0							
4	H950-AA FRAME ASSY H950-AA FRAME ASSY (PL) DWG INDEX H950	E-UA-H950-AA-0 A-PL-H950-AA-0 D-DI-H950-0-1							
5	H952-E CASTER SET DWG INDEX H952	A-PL-H952-E-0 D-DI-H952-0-1							
6	H952-F LEVELER SET DWG INDEX H952	A-PL-H952-F-0 D-DI-H952-0-1							
7	H952-C FAN DWG INDEX H952	A-PL-H952-C-0 D-DI-H952-0-1							
8	H950-DA MTG PANEL H950-DA MTG PANEL (PL) DWG INDEX H950	D-UA-H950-DA-0 A-PL-H950-DA-0 D-DI-H950-0-1							
9	H950-S FILTER DWG INDEX H950	A-PL-H950-S-0 D-DI-H950-0-1							
10	H952-B STABILIZER FEET DWG INDEX H952	A-PL-H952-B-0 D-DI-H952-0-1							
11	H952-AA END PANEL H952-AA END PANEL (PL) DWG INDEX H952	D-UA-H952-AA-0 A-PL-H952-AA-0 D-DI-H952-0-1							
12	H950-BA FULL LENGTH DOOR H950-BA FULL LENGTH DOOR (PL) DWG INDEX H950	D-UA-H950-BA-0 A-PL-H950-BA-0 D-DI-H950-0-1							
13	H950-DA COVER PANEL H950-DA COVER PANEL (PL) DWG INDEX H950	D-UA-H950-DA-0 A-PL-H950-DA-0 D-DI-H950-0-1							
14	PANEL LOGO PDP 11	C-1A-7407936-4-0							
15	H950-LB PANEL FRAME H950-LB PANEL FRAME (PL) DWG INDEX H950	C-UA-H950-LB-0 A-PL-H950-LB-0 D-DI-H950-0-1							
16	PANEL INLAY SILK SCREEN SILK SCREEN SILK SCREEN	C-1A-7408022-0-0 C-SS-7408022-0-1 C-SS-7407936-0-1 C-SS-7407936-0-2							
17	DISTRIBUTION PANEL ASSY DIST PNL ASSY PL DIST PNL BACK DISTRIBUTION PANEL DECALS	D-AD-7005909-0-0 A-PL-7005909-0-0 C-MD-7406765-0-0 D-IA-7406765-0-0 A-DC-7406765-0-0							

REV	NO.	DATE	BY	APP
1	A			

REVISIONS
CHANGE NO. H960CA-0001
D. NEVALA
D. PLATE

DEC FORM NO. DRD 100

FIRST USED ON OPTION/MODEL
PDP-11

DO NOT SCALE DRAWING UNLESS OTHERWISE SPECIFIED DIMENSION IN INCHES	DRN. <i>P. Ferguson</i> DATE 7-17-69
TOLERANCES DECIMALS FRACTIONS ANGLES ±.005 ± 1/64 ± 0°30'	CHK'D. <i>R. Rogers</i> DATE 7-23-69
FINAL SURFACE QUALITY REMOVE BURRS AND BREAK SHARP CORNERS	ENGR. <i>P. Plate</i> DATE 7/23/69
MATERIAL + + +	PROD. <i>P. Plate</i> DATE 7/23/69
FINISH + + +	PROD. <i>P. Plate</i> DATE 7/23/69

ORIGINAL EQUIPMENT CORPORATION
MAYNARD, MASSACHUSETTS

TITLE
DRAWING INDEX LIST
(PDP11 CAB)

SIZE CODE NUMBER OFV.
D DI H960-CA-1 A

SHEET OF DIST. 10

REV. A
NUMBER
D DI H960-CA-1



